



PAVIMENTAZIONI ANTITRAUMA IN GOMMA RICICLATA



Colore: **Rosso**, **Verde**, **Nero**, **Grigio**, **Blu**
Spessore 20-100 mm formato 50 cm x 50cm

Le Mattonelle antitrauma sono realizzate con granuli di gomma riciclata agglomerati con poliuretani polimerizzati.

Le mattonelle sono elastiche, flessibili e resistenti agli agenti atmosferici.

Vengono posate con degli appositi perni da inserire in fori predisposti su ogni lato e necessitano solo di un piano di posa opportunamente livellato.

Le nostre mattonelle sono certificate secondo la specifica **EN 1177** - Normativa Tecnica Europea per l'altezza di caduta nelle aree di gioco pubbliche



EUCHORA SRL

Sede Legale: Via F. Turati 40, 20121 Milano
Tel.: +39 0331-375984 Fax: +39 0331-643877

Sede Operativa: Via Arginello, 48 - 46030 Dosolo (MN)

P.IVA 13436100153 - Cap. Soc. € 10.000 - reg. Impr. Milano 13436100153

Web site: www.euchora.com Per Informazioni: info@euchora.com



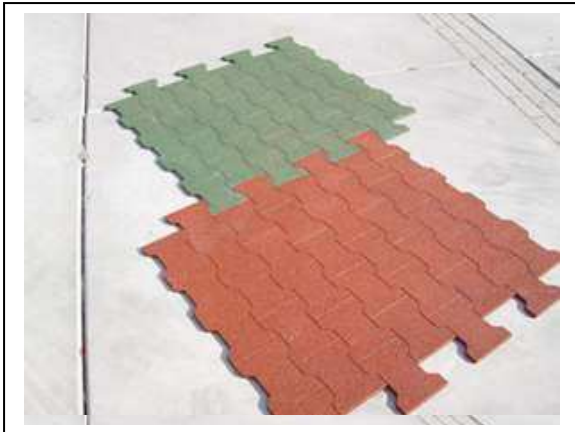
PAVIMENTAZIONI ANTITRAUMA IN GOMMA RICICLATA



Le Mattonelle autobloccanti sono realizzate con granuli di gomma riciclata agglomerati con poliuretani polimerizzati.

Sono la soluzione più semplice per la realizzazione di corsie in gomma, infatti non è necessaria alcuna speciale tecnica di posa ne' leganti appositi.

Si posano su uno strato livellato di sabbia, su una gettata di cemento o su qualsiasi altra superficie ben livellata e possono essere utilizzati all'esterno senza perdita di colore o usura fisica.

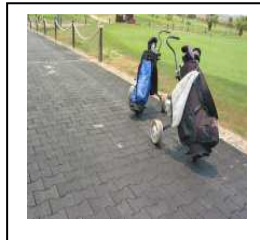
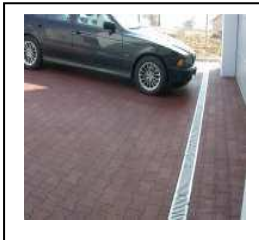


Formato Blocchetto : 200x165x43mm - 35Pz/m²
200x165x21mm - 35Pz/m²

Formato Pannello : 1120x1000x15mm
1120x1000x30mm
1120x1000x43mm

Colore : **Rosso**, **Verde**, **Nero**

Applicazioni: Pavimentazione area giochi, piscine, corsie golf, accessi a box ippici, corsie esterne, corsie per l'atletica





PAVIMENTAZIONI ANTITRAUMA IN GOMMA RICICLATA



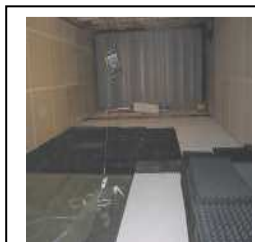
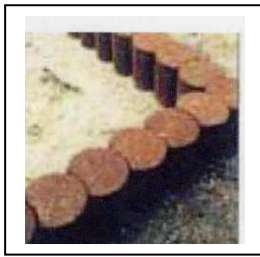
Con la gomma riciclata è possibile realizzare pavimenti indoor/outdoor per palestre, elementi di confine per aree gioco in sabbia o in gomma, copri scalini o elementi di protezione.



PANNELLI
INDOOR Sport
PANNELLO
2000X1000X7,5mm
PANNELLO
2000X1000X11,5mm



BORDURE
Bordura x aree gioco in sabbia 1000X300X150 mm
Bordura x aree gioco in sabbia 1000X250X50 mm
Copriscalino 1000X400X160 mm
Piloncini ALTEZZA 400 mm
Diametro 250
Piloncini ALTEZZA 600 mm
Diametro 250





PAVIMENTAZIONI ANTITRAUMA IN GOMMA RICICLATA

Annex no. 1 to the TYPE CERTIFICATE no. 333/05/08/01/0

Type of the safety mat:	Critical fall height:	Details of the measurement are set in the Evaluation Report:
Mat thickness of	Raster depth	
20 mm	without raster	0,6 m no. 1130/00/05/BT/IZ/S, from June 24 th , 2005
30 mm	15 mm	1,0 m no. 2242/00/05/BT/IZ/S, from December 8 th , 2005
30 mm	18 mm	0,9 m no. 0001/00/06/BT/IZ/S, from January 4 th , 2006
30 mm	18 mm	0,9 m no. 1769/00/05/BT/IZ/S, from October 24 th , 2005
with EPDM-toplayer		
40 mm	15 mm	1,3 m no. 2243/00/05/BT/IZ/S, from December 8 th , 2005
40 mm	28 mm	1,3 m no. 1163/00/04/BT/IZ/S, from June 9 th , 2004
40 mm	28 mm	1,3 m no. 1384/00/05/BT/IZ/S, from September 12 th , 2005
with EPDM-toplayer		
50 mm	15 mm	1,5 m no. 2244/00/05/BT/IZ/S, from December 8 th , 2005
50 mm	28 mm	1,7 m no. 1164/00/04/BT/IZ/S, from June 9 th , 2004
50 mm	"Egg" Raster	1,7 m no. 1088/00/04/BT/IZ/S, from June 1 st , 2004
65 mm	15 mm	1,7 m no. 2240/00/05/BT/IZ/S, from December 8 th , 2005
65 mm	50 mm	2,3 m no. 1165/00/04/BT/IZ/S, from June 9 th , 2004
80 mm	15 mm	1,7 m no. 2245/00/05/BT/IZ/S, from December 8 th , 2005
80 mm	50 mm	2,3 m no. 1129/00/05/BT/IZ/S, from June 24 th , 2005
100 mm	15 mm	2,2 m no. 2241/00/05/BT/IZ/S, from December 8 th , 2005
100 mm	50 mm	2,7 m no. 1089/00/04/BT/IZ/S, from June 1 st , 2004
100 mm	75 mm	3,2 m no. 2110/00/05/BT/IZ/S, from December 5 th , 2005
2x100 mm	à 50 mm	4,0 m no. 2075/00/04/BT/IZ/S, from November 18 th , 2004
RINGO mat dimension: 1482x995x21 mm	0,8 m	no. 1385/00/05/BT/IZ/S, from September 12 th , 2005

Validity conditions:

- The certificate shall only promote its holder, the said product and production places.
- The transmission of the certificate to third parties is inadmissible as well as the using by them.
- Any modifications of the product shall be announced to TÜV CZ s.r.o. to enable to decide about an additional conformity evaluation.
- This certificates shall be apply for 3 years from the date of its issue and can be renewed on demand.
- This certificate shall only be reproduced in full including all annexes.



Page 1

L'elevata qualità delle mattonelle Euchora è garantita dall'utilizzo di granuli di gomma a diametro costante (2mm) colorati con un sistema di pigmentazione atossica a pieno spessore.

Tutti i prodotti sono testati nelle prestazioni di resistenza a compressione e rigidità statica.

SAFETY MAT, CORNER – TECHNICAL SPECIFICATION

*Color and product No.: black 4070 / red 4071 / green 4072

Material compound:	recycled rubber bounded by polyurethane
Approximate dimensions:	500 x 500 x 50mm
Recommended bottom surface:	concrete
Density:	app. 769kg/m ³
Long term thermal stability:	-40°C ... +80°C
Short term thermal stability:	up to +110°C
Fire classification:	EF, E (according to EN 13501-1:2003)
Dimension deviation:	max. 1.5% - depending on temperature changes
Color stability:	color may fade out with UV exposure over time resistant to weak acids and lyes conditionally resistant to oils
Chemical resistance:	
Weight per piece:	8.10kg
Pieces per m ² :	4
Pieces per pallet:	120
Pallet dimensions:	1100 x 1100mm
Pallet height:	1660mm
Pallet brutto weight:	1002kg

TYPE CERTIFICATE



Registration Number 333/05/08/01/0

issued according to § 3 of the Decree of the Government no. 173/1997 Coll. as amended for the producer:

REGUTEC s.r.o.

Němčický 92

CZ – 664 66 Němčický u Židlochovic

Ident.-No.: 49437615

for the products:

Name: Safety mats
Model range: see the annex no. 1 to this certificate
Producer: REGUTEC s.r.o.
Němčický 92
CZ – 664 66 Němčický u Židlochovic

at which the certifying was carried out according to the provision of the § 10 of the Law no. 22/1997 Coll. as amended.

Herewith we certify the conformity of the features of the subject product specimen with the basic requirements of the

Decree of the Government no. 173/1997 Coll. as amended, and ČSN EN 1177:1998 + Amendment A1:2003.

This certificate has been issued in order to issue the product conformity declaration with the mentioned technical regulation.
The evaluation details and list of the important parts of the technical documentation are set in the particular Evaluation Reports (see the annex to this certificate) whose are an integral part of this certificate.

This certificate shall apply till: 12.01.2009

The details and validity conditions are set in the annex to this certificate, which is its integral part and contains 1 page.

In Prague, 2006-01-12



Ing. Ivo Drátek
for the authorized body

TÜV CZ s.r.o. - Novodvorská 994, 147 00 Praha 4 - CZ, Ident.-no. 63987121
Municipal Court in Prague, volume C, insert 2842Z, entry date: 20.7.1996
Authorized Body 211 according to the Law no. 22/1997 Coll. as amended.

TÜV CZ s.r.o. - Skupina TÜV SÜD - Certifikační orgán - Novodvorská 994 142 21 Praha 4 - Česká republika

I dati esposti sono forniti in buona fede a valori ricavati dalle produzioni attuali.
Ci riserviamo di modificare o aggiornare le prestazioni e caratteristiche senza preavviso.
Non ci compete nessuna responsabilità sull'uso improprio del prodotto e delle informazioni

EUCHORA SRL
Sede Legale: Via F. Turati 40, 20121 Milano
Tel.: +39 0331-375984 Fax: +39 0331-643877
Sede Operativa: Via Arginello, 48 - 46030 Dosolo (MN)
P.IVA 13436100153 - Cap. Soc. € 10.000 - reg. Impr. Milano 13436100153
Web site: www.euchora.com Per Informazioni: info@euchora.com